

Dell Boomi Master Data Hub

Ensuring Quality Data to Power Your Business

Poor data quality is a very real problem in all organizations. Keeping information accurate and synchronized across multiple systems puts enormous pressure on already strained IT resources. But good data is the lifeblood of any enterprise.

Master Data Management (MDM) holds the key for ensuring data quality to drive efficiencies and improvements in every area of your operations. However, very few organizations possess the skills and resources to deploy a scalable MDM system.

Boomi Master Data Hub and its cloud-native capabilities make it possible for your data analysts to model, match, synchronize, cleanse, and enrich data across domains. With Boomi Master Data Hub, you can easily scale your Master Data Hub processes to accommodate growth in data volume and business applications.

Key Benefits

Cloud Simplicity. Cloud Economy. Cloud Speed.

With next generation features, Boomi Master Data Hub ensures your data is accurate, complete and up-to-date. Setup, configuration, and management are all handled through a unified, cloud-native environment.

Increase Data Accuracy and Consistency

With increasing end points, point-to-point integrations quickly become unmanageable. Boomi Master Data Hub uses a centralized data hub architecture that all contributing systems can use. It provides real-time validation, enrichment, and data matching across all connected systems.

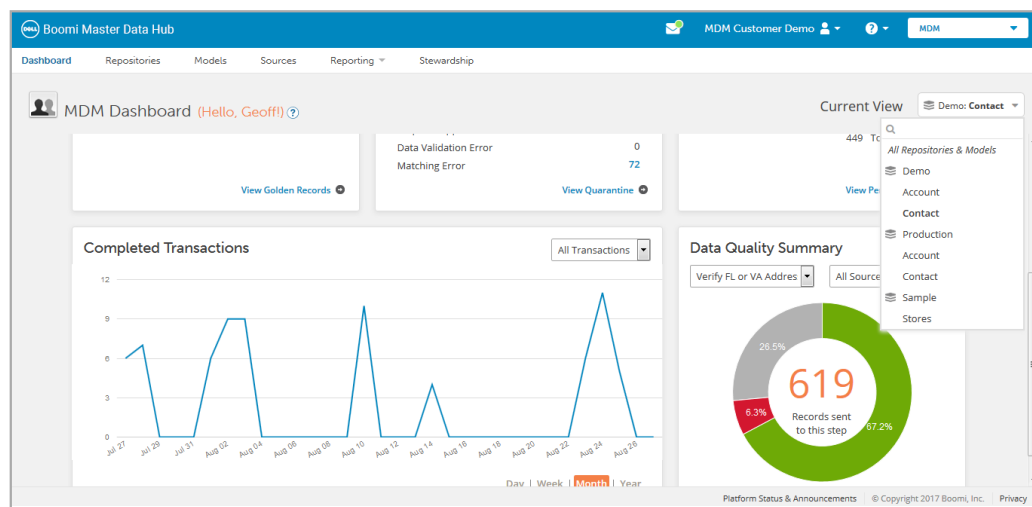
Multi-Domain, Multi-Application MDM

Domain-specific MDM products hinder creation of a single source of truth for the entire organization. Boomi Master Data Hub is domain agnostic and allows you to create custom fields for different data domains to support all your applications.

Accelerate Time-to-Insight

Boomi Master Data Hub's comprehensive data management and governance capabilities ensure that the highest quality data is available to your teams so they can make decisions faster. As part of the Boomi unified integration platform, our Master Data Hub product is affordable, centralized in the cloud for anytime/anywhere access, and integrates with any combination of SaaS and on-premise applications.

Use our comprehensive dashboard to monitor and measure operational traffic and data quality metrics across all domains and sources.



Key Features

Boomi Master Data Hub's hub-based architecture provides flexible data management while retaining a Single Source of Truth.



Centralized Data Quality

Validate, enrich, and report on updates to master data through a collaborative, team-based cloud UI.



Real-Time, Bi-Directional Data Flow

Focus on data enrichment, not just validation, through real-time, bi-directional synchronization of data to your cloud and on-premise applications.



Data Stewardship

Manage data for consistency and accuracy with powerful tools to validate, cleanse, and merge quarantined records.



Data Governance

Centralized approval processes to enforce data governance using configurable rules-based policies.



Comprehensive Analytics

Leverage robust reporting capabilities and dashboards to monitor and measure the health of your data quality and MDM programs.



Simplified Integration Mapping:

Reduce integration development time for applications or user flows through a visual, no-coding experience.



Boomi Suggest

Harness the power of the Boomi Community to model domains. Get feedback on how your models align with peers in your content domain.

“We use Boomi because it works, and it's so easy to put in place. And with Boomi Master Data Hub, our data is correct everywhere, whether it's flowing to our HR applications, finance applications, or our scientific tools.”

Marcello Damiani

Chief Digital Officer, Moderna Therapeutics

To learn more, visit us today at www.boomi.com